

United Way of Yellowstone County

2021 Workplace Campaign

Let's Get Started

- ▶ Why are we here?
- ▶ Last Year's Results
 - ▶ Nearly \$710,310 raised!
 - ▶ Over 1,789 donations!
- ▶ What inspires you to give and help others?

UWYC in the Community

- What do you think are the greatest needs in our community?
- Impact Areas



HEALTH



EDUCATION



INCOME



SCHOOL READINESS



SCHOOL SUCCESS



CRISIS STABILIZATION



SENIOR INDEPENDENCE

UWYC in the Community

UWYC Programs

- ▶ Best Beginnings
- ▶ Attendance Matters
- ▶ Success Mentoring
- ▶ Continuum of Care
- ▶ Montana 211
- ▶ CARE Academy
- ▶ Discover Zone

Partner Agencies

- ▶ Adult Resource Alliance
- ▶ Big Sky Senior Services
- ▶ Boys and Girls Club of Yellowstone County
- ▶ CASA of Yellowstone County
- ▶ Family Service, Inc.
- ▶ Friendship House
- ▶ HRDC
- ▶ Tumbleweed
- ▶ Young Families Early Head Start
- ▶ YWCA

Impact of Contributions

THE MULTIPLIER EFFECT



Multiply your generosity with UWYC!

When you give to United Way of Yellowstone County:

\$1 = \$3.55

2020 Campaign dollars raised:

\$688,536.54

UWYC gave back to the community:

\$2,444,716.23

Community Impact Highlights:

Value of total Volunteers hours totaled **\$113,747.00**

\$35,581.00 in inkind and donated supplies

\$288,750.00 Allocated to Partner Agencies

Donations to nonprofit through designations totaled **\$42,408.44**

An additional **\$1,384,901.74** in Local Community Support

\$579,328.05 for CARE Academy

INVEST WISELY WITH UWYC

FOR EVERY DOLLAR DONATED:

- **\$0.89 IS DIRECTED TO PROGRAMS**
- **\$0.04 COVERS OPERATING COSTS**
- **\$0.07 ADVANCES FUNDRAISING EFFORTS**

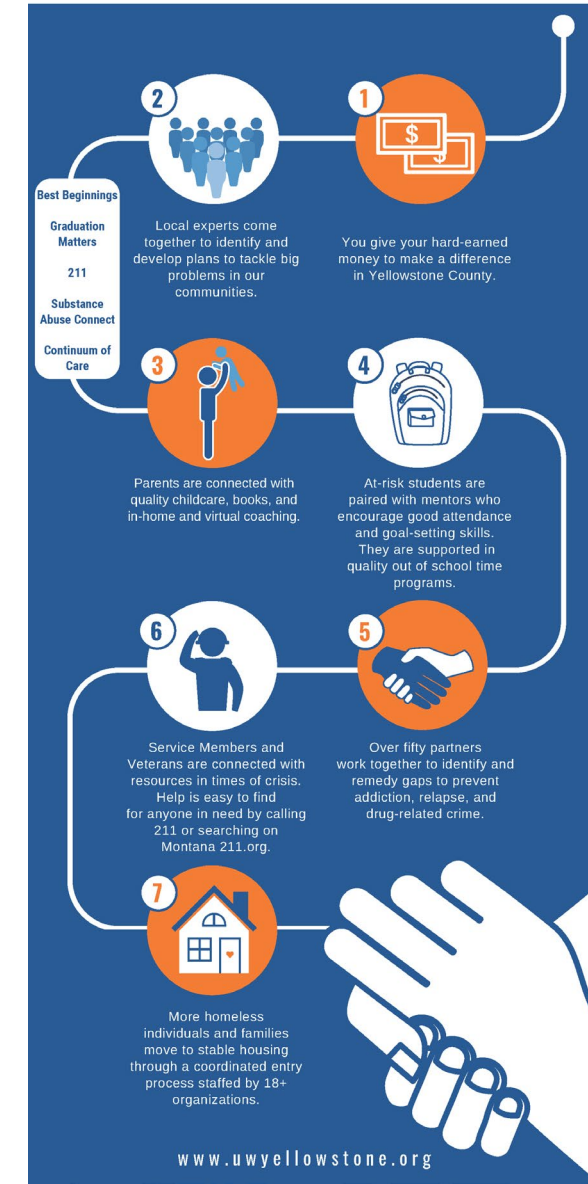


Volunteering with UWYC

- ▶ Days of Caring
- ▶ Success Mentors
- ▶ CARE Academy & Discover Zone
- ▶ Leadership Opportunities
 - ▶ Board Members
 - ▶ Committee Members

Impact of Contributions

- ▶ My LIVE UNITED Story
- ▶ Local Impact
 - ▶ \$ raised here, stays here!
- ▶ Partner Testimony



Make an Impact

- ▶ This Year's Goal
 - ▶ \$1 MILLION DOLLARS!
- ▶ Benefits to Giving
 - ▶ Match program
 - ▶ Incentive
 - ▶ Fast of payroll deduction
 - ▶ Feel good knowing you are improving lives!

UWYC GIVING GUIDE

- Calculate your investment based on how often you are paid.
- It doesn't take a lot to make a big impact!

PLEDGE AMOUNT	Weekly (52x/year)	Bi-Weekly (26x/year)	Bi-Monthly (24x/year)	Monthly (12x/year)
\$5,000	\$96.15	\$192.31	\$208.33	\$416.67
\$1,000	\$19.23	\$38.46	\$41.66	\$83.33
\$500	\$9.62	\$19.23	\$20.83	\$41.67
\$250	\$4.80	\$9.61	\$10.42	\$20.83
\$100	\$1.92	\$3.85	\$4.17	\$8.33



LIVE UNITED

Ways to Give

► Pledge Forms

I choose to LIVE UNITED. 2173 Overland Ave, Billings, MT 59102 (406) 272-8564 www.unitedwayyellowstone.org

Tell Us About Yourself

First Name _____ Last Name _____ DOB _____
City _____ ST _____ Zip Code _____
Home Address _____
Employer _____
Preferred Phone () _____
☐ I am a local contributor. I have been giving to UMYC for _____ years.
☐ Contact me about making a legacy gift by including UMYC in my will, trust or estate plan.
☐ I am interested in volunteering on a UMYC committee or the Board of Directors.

JOIN THE FIGHT
UWYC fights for the health, education and financial stability of every person in Yellowstone County. You are a critical part of this fight. When you give for your community, it affects thousands of lives. Your support will make a significant difference in our community by improving the lives of our neighbors, families, and friends.

My Total Annual Investment: \$

Investment Options
☐ Easy Payroll Deduction
Amount Per Pay Period: ☐ \$100 ☐ \$50 ☐ \$25 ☐ \$10 ☐ \$5 ☐ Other \$ _____
Number of Pay Periods: ☐ 12 ☐ 24 ☐ 36 ☐ Other _____
☐ Check/Cash - Check No. _____
☐ Check Transfer - Please contact me with information.
☐ Credit/Debit - For security purposes, make payments online at www.unitedwayyellowstone.org/give

My Total Annual Investment: \$

Investment Guide

Annual Investment	Monthly Investment	Quarterly Investment	Semi-Annual Investment	Annual Investment
\$5,000	\$416.67	\$125.00	\$250.00	\$5,000
\$1,000	\$83.33	\$25.00	\$50.00	\$1,000
\$500	\$41.67	\$12.50	\$25.00	\$500
\$250	\$20.83	\$6.25	\$12.50	\$250
\$100	\$8.33	\$2.50	\$5.00	\$100

Investment Options
☐ This is a joint investment with my spouse/partner.
Spouse/Partner Name: _____ Spouse/Partner Employer: _____
☐ I wish to be acknowledged as:
☐ I wish would like to remain anonymous.
☐ Optional: Designate part or all of my contribution to:
Designation Amount \$ _____
Name of Organization _____ Phone _____
Address _____
☐ Please share my information when requested by the designated agency.

THANK YOU FOR LIVING UNITED!

• QR Codes



DONATE



PAYPAL

• Text 2 Give



Stay Engaged

- ▶ What is your biggest take away from today?
- ▶ Sign up for our newsletter!



- ▶ Sign up to volunteer!
- ▶ Check in on social media!



Thank You!

► Follow us on Social Media



facebook.com/UnitedWayYellowstone



[@UnitedWayYellowstone](https://www.instagram.com/UnitedWayYellowstone)



[United Way of Yellowstone County](https://www.youtube.com/UnitedWayYellowstone)